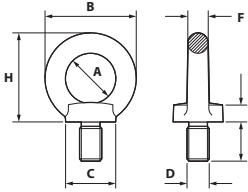
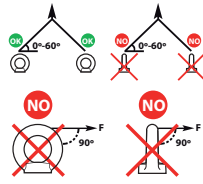


ANILLA ELEVACIÓN MACHO DIN 580 8.8

EYE BOLT DIN 580 8.8
 ANNEAU DE LEVAGE MALE DIN 580 8.8
 RINGSCHRAUBEN DIN 580 8.8



ACERO 8.8



ACERO 8.8 / STEEL 8.8

CAJA / BOX / BOÎTE

CÓDIGO Code / Code	MEDIDA Measure / Mesure DxL m.m.	* CMU 0° Tn	A m.m.	B m.m.	C m.m.	E m.m.	F m.m.	H m.m.	PESO Weight / Poids Kg.	
5808008	M8x13	0,8	25	45	25	10	10	45	0,09	1
5808010	M10x17	1,0	25	45	25	10	10	45	0,11	1
5808012	M12x21	1,6	35	63	35	14	14	62	0,27	1
5808016	M16x27	4,0	35	63	35	14	14	62	0,31	1
5808020	M20x30	6,0	50	90	50	20	20	90	0,86	1
5808024	M24x36	8,0	50	90	50	20	20	90	0,90	1
5808030	M30x45	12,0	60	108	65	24	24	109	1,70	1

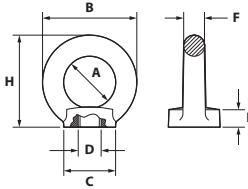
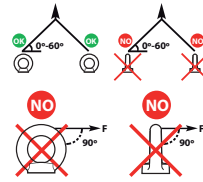
Roscar a mano / To be screwed by hand / A visser a main / Von Hand aufschrauben

ANILLA ELEVACIÓN HEMBRA DIN 582 8.8

EYE NUT DIN 582 8.8
 ANNEAU DE LEVAGE FEMELLE DIN 582 8.8
 RINGMUTTER DIN 582 8.8



ACERO 8.8



ACERO 8.8 / STEEL 8.8

CAJA / BOX / BOÎTE

CÓDIGO Code / Code	MEDIDA Measure / Mesure DxL m.m.	* CMU 0° Tn	A m.m.	B m.m.	C m.m.	E m.m.	F m.m.	H m.m.	PESO Weight / Poids Kg.	
5828008	M8	0,8	25	45	25	10	10	45	0,10	1
5828010	M10	1,0	25	45	25	10	10	45	0,10	1
5828012	M12	1,6	35	63	35	14	14	62	0,26	1
5828016	M16	4,0	35	63	35	14	14	62	0,26	1
5828020	M20	6,0	50	90	50	20	20	90	0,75	1
5828024	M24	8,0	50	90	50	20	20	90	0,75	1
5828030	M30	12,0	60	108	65	24	24	109	1,40	1

Roscar a mano / To be screwed by hand / A visser a main / Von Hand aufschrauben

MEDIDA MEASURE MESURE ABMESSUNG	*CMU (Tn)						PAR DE APRIETE MÁX. MAX. TIGHT. COUPLE MAX. COUPLE SERRAGE MAX. DREHMOMENT
	1 BRAZO SINGLE LEG 1 BRIN 1 STRANG	2 BRAZOS 2 LEGS 2 BRINS 2 STRÄNGE	2 BRAZOS 2 LEGS 2 BRINS 2 STRÄNGE	3-4 RAMALES 3-4 LEGS 3-4 BRINS 3-4 STRÄNGE	3-4 RAMALES 3-4 LEGS 3-4 BRINS 3-4 STRÄNGE	3-4 RAMALES 3-4 LEGS 3-4 BRINS 3-4 STRÄNGE	
m.m.	0° Tn	0° Tn	0° - 45° Tn	45° - 60° Tn	0° - 45° Tn	45° - 60° Tn	Nm
M8 / M8x13	0,8	1,6	0,28	0,2	0,4	0,28	8
M10 / M10x17	1	2	0,35	0,25	0,5	0,35	16
M12 / M12x21	1,6	3,2	0,56	0,4	0,8	0,56	28
M16 / M16x27	4	8	1,4	1	2	1,4	70
M20 / M20x30	6	12	2,1	1,5	3	2,1	135
M24 / M24x36	8	16	2,8	2	4	2,8	230
M30 / M30x45	12	24	4,2	3	6	4,2	465